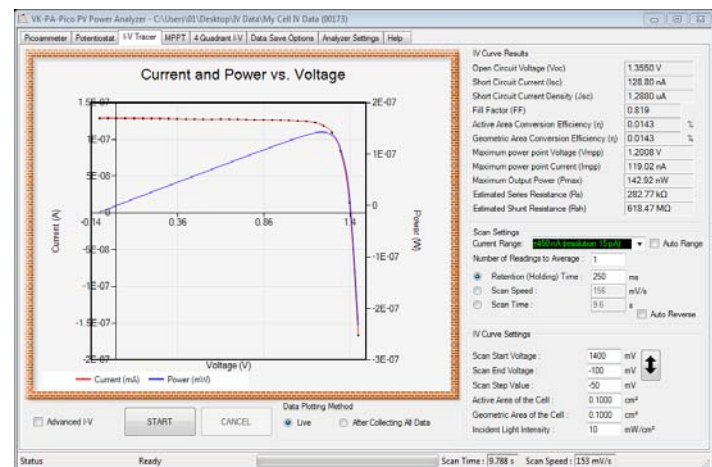
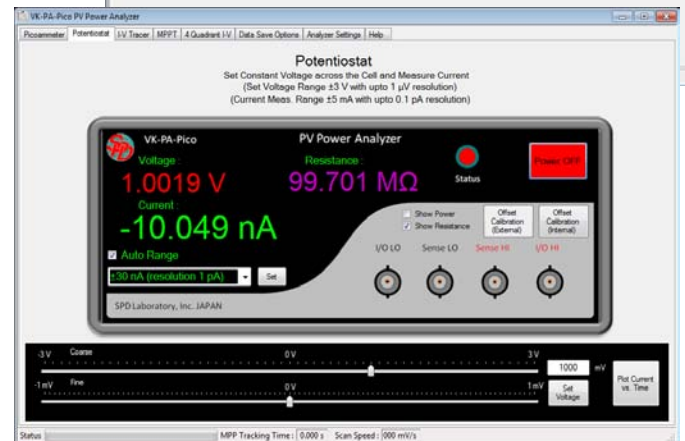
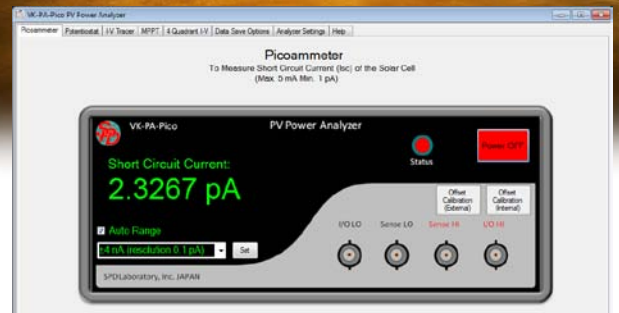




# PV Power Analyzer

Type VK-PA-Pico  
(Ver. 5)

For Pico Ampere Range I-V Tracing and  
Pico Watt Range Maximum Power Point Tracking (MPPT)



## Specifications

Measurement Range	Voltage: ±10 V Current: Max. ±5 mA, Min. 10 pA	
Current Measuring Ranges	±5 mA (resolution 160 nA) ±2.5 mA (resolution 80 nA) ±1.25 mA (resolution 40 nA) ±600 μA (resolution 20 nA) ±300 μA (resolution 10 nA) ±120 μA (resolution 4 nA) ±60 μA (resolution 2 nA) ±30 μA (resolution 1 nA) ±15 μA (resolution 500 pA) ±7 μA (resolution 250 pA) ±3.5 μA (resolution 100 pA) ±1.8 μA (resolution 60 pA)	±900 nA (resolution 30 pA) ±450 nA (resolution 15 pA) ±230 nA (resolution 7 pA) ±115 nA (resolution 4 pA) ±55 nA (resolution 2 pA) ±35 nA (resolution 1 pA) ±18 nA (resolution 0.6 pA) ±9 nA (resolution 0.3 pA) ±4 nA (resolution 0.1 pA) ±2 nA (resolution 70 fA) ±1 nA (resolution 35 fA) ±600 pA (resolution 17 fA)
User Interface and Data Collection	Computer software is provided for control of all the functions and data logging. Measurement data can be saved as a text file and directly plotted on Microsoft Excel graph. (Windows based PC required)	
Communication	USB	
Power Requirement	100 VAC (50-60 Hz)	
Dimensions, Weight	210 mm (W) x 350 mm (D) x 88 mm (H) , 3.0 kg	

## Pico Ammeter

In this mode, analyzer works as an Ideal ammeter (voltage drop < 5 μV) to measure short circuit current of solar cell.

## Potentiostat

In this mode, analyzer measures current under a constant voltage given by user. Voltage, Current, Power or Resistance is displayed onscreen. It is also possible to plot those parameters against time.

## I-V Tracer

In this mode, user can select START, END, and STEP voltages and scan condition (desired scan speed, scan time, or holding time). Analyzer plots current and power vs. voltage curves. Calculated results include  $V_{oc}$ ,  $I_{sc}$ ,  $J_{sc}$ ,  $P_{max}$ ,  $V_{mpp}$ ,  $I_{mpp}$ , FF,  $R_{s}$ ,  $R_{sh}$ ,  $\eta_{activeA}$ , and  $\eta_{geoA}$ . Advanced I-V option allows to set initial, middle, and end point holding times. Also plots I vs. t transient curve for all data points and/or under a selected fixed voltage.

## Maximum Power Point Tracking (MPPT)

In this mode, analyzer acts like the best load for solar cell to extract maximum power and keep tracking MPP continuously. Plots the  $P_{max}$ ,  $V_{mpp}$ ,  $I_{mpp}$  and Efficiency vs. time curves and also displays current/power vs. voltage plots.

## SPD Laboratory, Inc.

2-35-1 Johoku, Hamamatsu, 432-8011, JAPAN  
Tel: +81-53-474-7901 Fax: +81-53-401-7080

Email: [inquiry@spd-lab.com](mailto:inquiry@spd-lab.com)

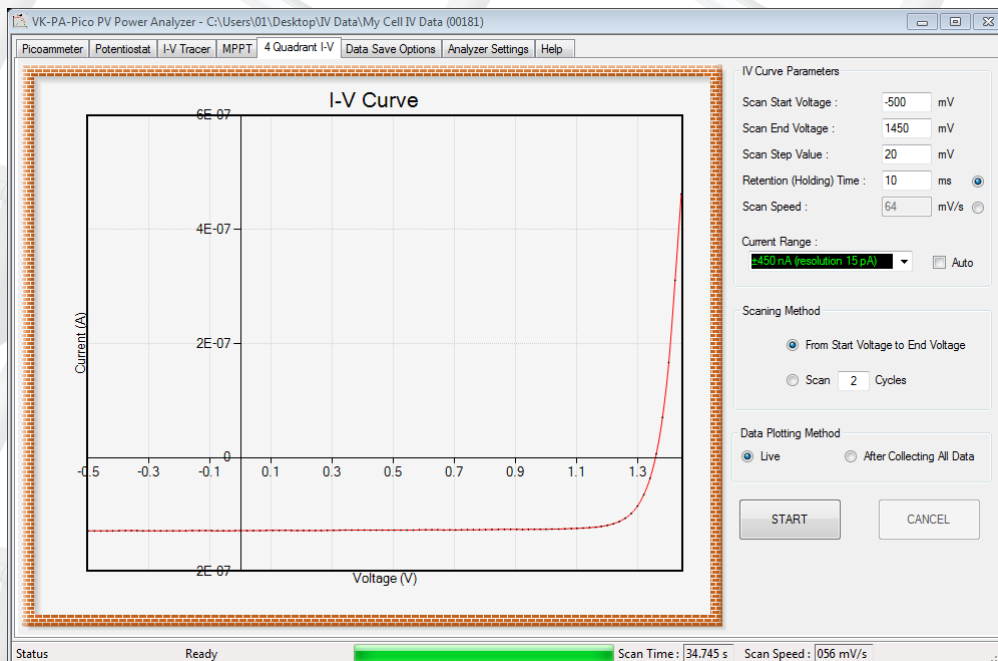
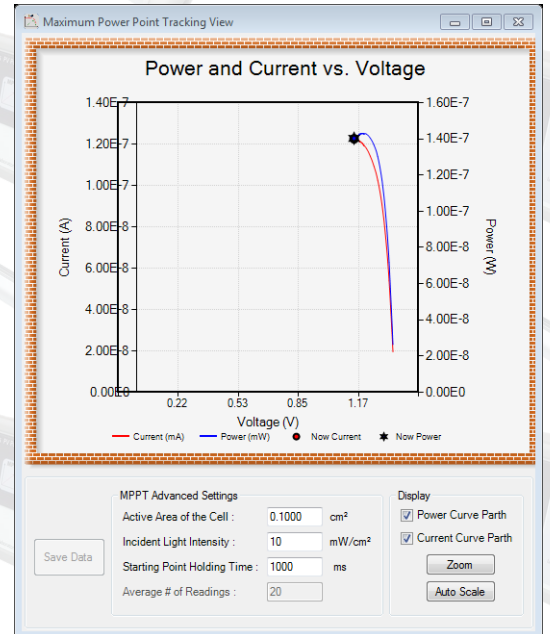
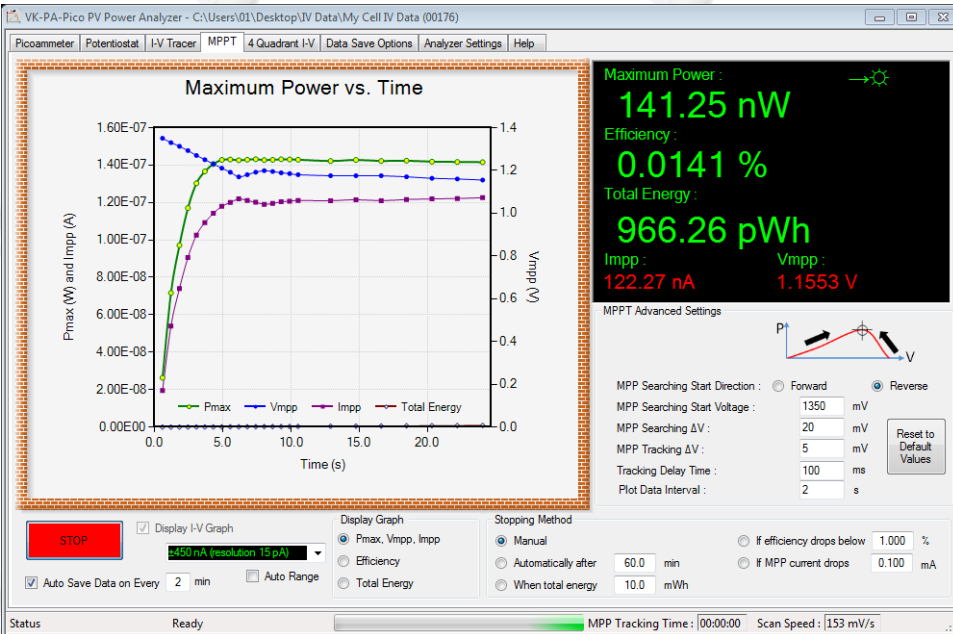
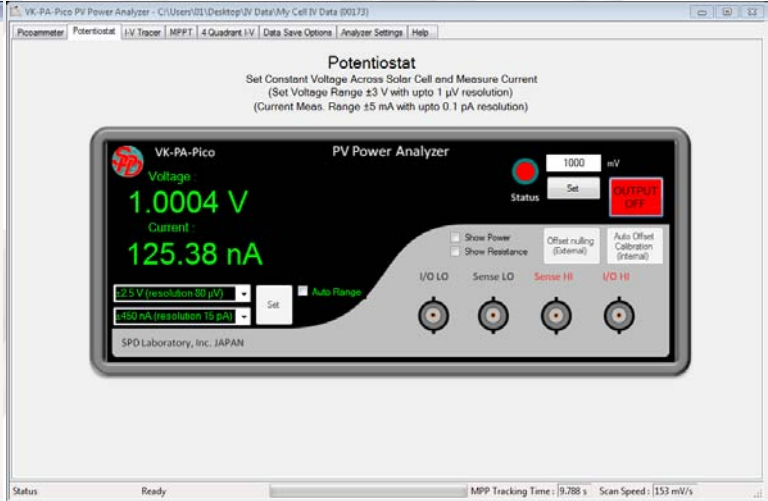
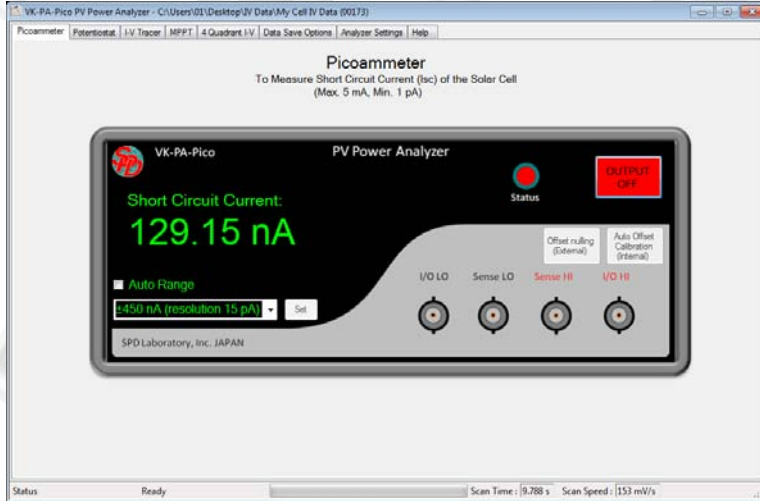
Web: <http://www.spdlab.com/English/Home.html>



# PV Power Analyzer

Screenshots of Control Software

VK-PA-Pico  
(Ver. 5)



SPD Laboratory, Inc.

2-35-1 Johoku, Hamamatsu, 432-8011, JAPAN Tel: +81-53-474-7901 Fax: +81-53-401-7080 Email: [inq@spd-lab.com](mailto:inq@spd-lab.com)

Web: <http://www.spdlab.com/English/Home.html>



All the graphs and data can be saved in a Microsoft Excel Workbook.

# PV Power Analyzer

Screenshots of Control Software

VK-PA-Pico  
(Ver. 5)

SPD Laboratory, Inc.

2-35-1 Johoku, Hamamatsu, 432-8011, JAPAN Tel: +81-53-474-7901 Fax: +81-53-401-7080 Email: [inq@spd-lab.com](mailto:inq@spd-lab.com)

Web: <http://www.spdlab.com/English/Home.html>



# PV Power Analyzer

## VK-PA-Pico (Ver. 5)

### VK-PA-Pico Detailed Electrical Specifications

Measuring Range	Voltage: $\pm 10$ V Current: $\pm 5$ mA	
Specifications of A/D Converters	Resolution: 16 Bit Integral Nonlinearity: $\pm 0.0003\%$ Utilize on-chip digital calibration to eliminate offset and gain errors.	
Voltage Measuring Ranges	$\pm 10$ V (resolution 0.3 mV) $\pm 5$ V (resolution 0.15 mV) $\pm 2.5$ V (resolution 80 $\mu$ V) $\pm 1.25$ V (resolution 40 $\mu$ V) $\pm 0.625$ V (resolution 20 $\mu$ V) $\pm 300$ mV (resolution 10 $\mu$ V) $\pm 150$ mV (resolution 5 $\mu$ V) $\pm 80$ mV (resolution 2 $\mu$ V)	
Current Measuring Ranges	$\pm 5$ mA (resolution 160 nA) $\pm 2.5$ mA (resolution 80 nA) $\pm 1.25$ mA (resolution 40 nA) $\pm 600$ $\mu$ A (resolution 20 nA) $\pm 300$ $\mu$ A (resolution 10 nA) $\pm 120$ $\mu$ A (resolution 4 nA) $\pm 60$ $\mu$ A (resolution 2 nA) $\pm 30$ $\mu$ A (resolution 1 nA) $\pm 15$ $\mu$ A (resolution 500 pA) $\pm 7$ $\mu$ A (resolution 250 pA) $\pm 3.5$ $\mu$ A (resolution 100 pA) $\pm 1.8$ $\mu$ A (resolution 60 pA)	$\pm 900$ nA (resolution 30 pA) $\pm 450$ nA (resolution 15 pA) $\pm 230$ nA (resolution 7 pA) $\pm 115$ nA (resolution 4 pA) $\pm 55$ nA (resolution 2 pA) $\pm 35$ nA (resolution 1 pA) $\pm 18$ nA (resolution 0.6 pA) $\pm 9$ nA (resolution 0.3 pA) $\pm 4$ nA (resolution 0.1 pA) $\pm 2$ nA (resolution 70 fA) $\pm 1$ nA (resolution 35 fA) $\pm 600$ pA (resolution 17 fA)



**SPD Laboratory, Inc.**

2-35-1 Johoku, Hamamatsu, 432-8011, JAPAN

Tel: +81-53-474-7901 Fax: +81-53-401-7080 Email: [inquiry@spd-lab.com](mailto:inquiry@spd-lab.com)

Web: <http://www.spd-lab.com/English/Home.html>